



ASSESSMENT OF FAIR HOUSING:

STAKEHOLDER KICKOFF MEETING

October 17 and 18, 2017

Presented by

Mollie Fitzpatrick, Jen Garner, Mehgie Tabar
1999 Broadway, Suite 2200
Denver, Colorado 80202
(303) 321-2547 ext. 236
jgarner@bbcresearch.com

BBC
RESEARCH &
CONSULTING

AGENDA

- ▶ Welcome!
- ▶ Present overview of AFH process, community engagement plan and study timeline
- ▶ Discuss how you can share in community engagement (thank you!)
- ▶ Discuss fair housing issues and access to opportunity, including needs, priorities and potential solutions.
- ▶ Next steps

WELCOME AND INTROS

THE PROJECT TEAM

The AFH team is led by BBC Research & Consulting's Heidi Aggeler, Mollie Fitzpatrick, Jen Garner and Mehgie Tabar. We:

- ▶ Have recently submitted 3 AFH studies, including a large regional study in San Mateo County, CA. Three other regional AFH studies in progress.
- ▶ Recently assisted Jonesboro, Arkansas with bringing their "passed back" AFH to approval.
- ▶ Provided technical assistance to the Omaha-Council Bluffs Regional AFH on community engagement, identifying contributing factors and strategy and goal development
- ▶ Continue to be a key part of HUD AFH technical assistance training. Specialty areas: data and mapping analysis, community engagement, strategy and goals development

DENVER-AURORA-BOULDER COUNTY (DAB) REGIONAL AFH PARTICIPANTS

- ▶ City and County of Denver
- ▶ Denver Housing Authority
- ▶ City of Aurora
- ▶ Aurora Housing Authority
- ▶ City of Boulder
- ▶ Boulder Housing Partners
- ▶ Boulder County
- ▶ Boulder County Housing Authority
- ▶ City and County of Broomfield
- ▶ City of Longmont
- ▶ Longmont Housing Authority

INTRODUCTIONS

- ✓ Your name
- ✓ your organization

AND:

(in one sentence)

- ✓ What led you to work in public service?

AFH PROCESS AND TIMELINE

FAIR HOUSING PLANNING OVERVIEW

HUD's AFFH Rule:

- ▶ Adopted on July 16, 2015, applies to “program participants”—recipients of the CDBG, HOME, ESG, HOPWA—as well as PHAs.
- ▶ Purpose of rule: “Provide HUD program participants with an approach to more effectively and efficiently incorporate into their planning processes the duty to affirmatively further the purposes and policies of the Fair Housing Act.”
- ▶ “Refinement” of the Analysis of Impediments to Fair Housing Choice (AI) needed because of lawsuits (Westchester County) and General Accounting Office (GAO) audit

Assessment of Fair Housing(AFH):

- ▶ Replaces the AI as the HUD mandated review of fair housing
- ▶ Broader assessment of access to opportunity and housing choice
- ▶ Additional direction and HUD-provided data through the online AFFH Tool (maps and tables)

SO... WHAT IS THE AFH?

- ▶ A data- and community-driven approach to assessing segregation and expanding opportunity, among other fair housing issues
- ▶ Designed to aid local leaders and community stakeholders in developing fair housing priorities and goals that will ultimately increase fair housing choice, build opportunity for all residents, and strengthen communities.

The purpose of the AFFH rule is to set up a framework for taking **meaningful actions**, to affirmatively further fair housing.

The AFH is that framework.

AFH CONTENT

1. Executive Summary
2. Community Participation Process
3. Assessment of Past Goals and Actions
4. Analysis of Fair Housing issues
5. Fair Housing Enforcement, Outreach Capacity, and Resources Analysis
6. Goals and Priorities

Key topic areas:

- ▶ Demographic Summary
- ▶ Segregation/Integration
- ▶ R/ECAPs
- ▶ Disparities in Access to Opportunity
- ▶ Disproportionate Housing Needs
- ▶ Publicly Supported Housing Analysis
- ▶ Disability and Access Analysis



Identify Fair Housing Issues



Identify Contributing Factors



Prioritize Contributing Factors

HUD DATA AND MAPPING TOOL

<https://egis.hud.gov/affht/>

- ▶ HUD provides 17 maps and 16 tables for each jurisdiction
- ▶ Jurisdiction and regional data
- ▶ Demographic trends, Race/ethnicity, national origin, LEP, R/ECAPs, Publicly supported housing, access to opportunity, disability, homeownership, etc.
- ▶ Local data and local knowledge is crucial!

COMMUNITY ENGAGEMENT

AFH REQUIRES COMMUNITY INPUT

AFH Community Participation Requirements

- ▶ Update Citizen Participation Plan to include AFH.
- ▶ Make AFH data available to the community and provide opportunities for meaningful participation
- ▶ Provide opportunities for the public to be involved in developing the AFH and setting goals and priorities
- ▶ Ask, “who is missing from the process?” and seek them out
- ▶ Summarize all comments obtained in the community participation process. Include a summary of any comments or views not accepted and the reasons why. Similar to Con Plan requirements.
- ▶ Hold at least one public hearing before draft AFH released
- ▶ Minimum 30 day public comment period.

COMMUNITY ENGAGEMENT PLAN

Clarifying terms. For the purposes of the AFH Community Engagement Process...

- ▶ **Resident**—Any person living in Denver, Aurora, Boulder County or Broomfield County

- ▶ **Stakeholders**—typically falls into one or more categories:
 - Advocate (professional or organized volunteer group leader representing local residents from the perspective of a policy issue, culture, or protected class)
 - Subject matter expert
 - Elected official, city or county staff member
 - Members of boards or commissions
 - Leadership or staff of organizations providing social services to members of protected classes

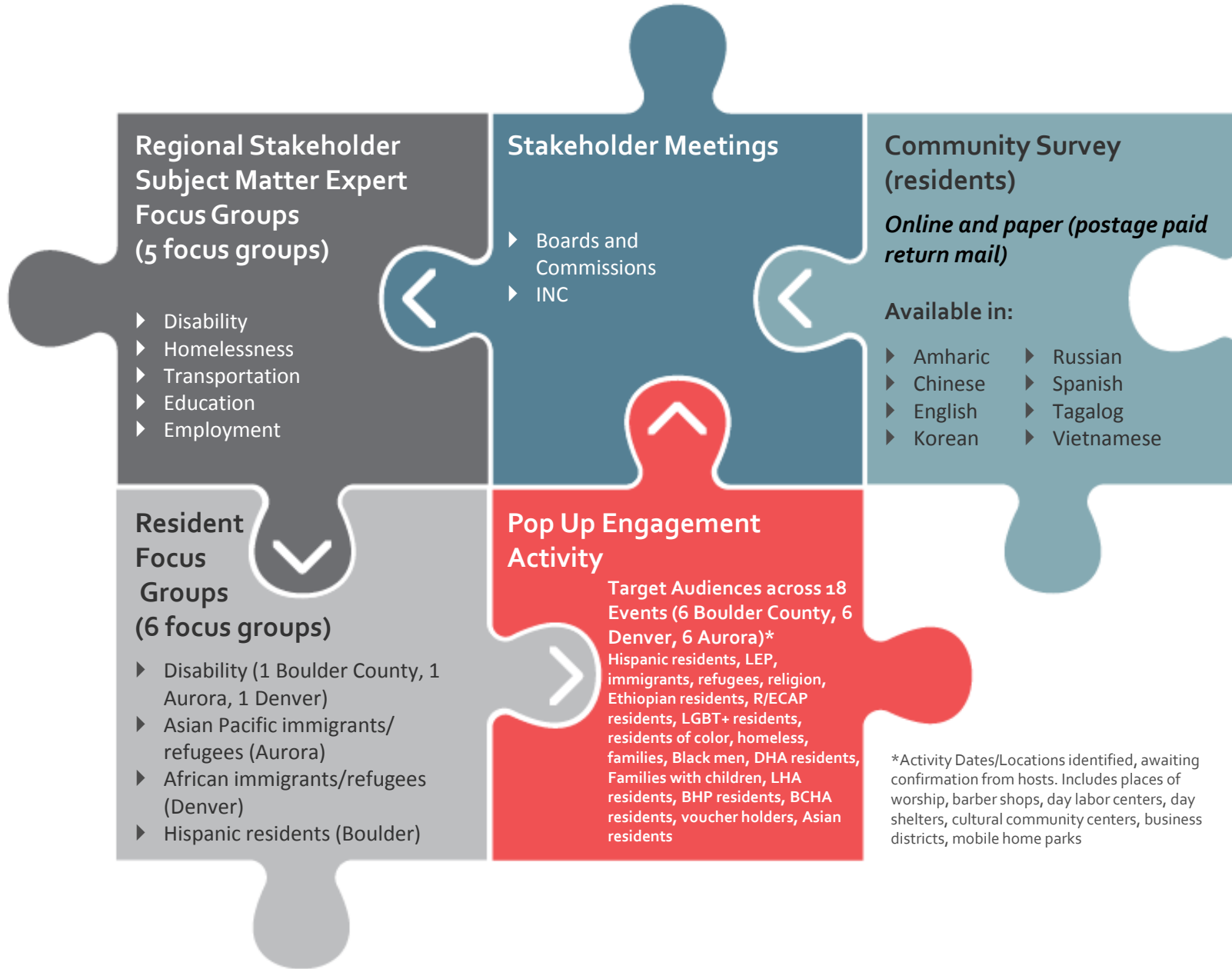
COMMUNITY ENGAGEMENT PLAN



BBC plan includes:

- ▶ **Five focus groups with stakeholders**
- ▶ **Six community meetings** held in various locations throughout the region to share maps and data, present preliminary findings and explore solutions
- ▶ **Resident focus groups** held with residents with disabilities (3); African immigrants/refugees (1), Asian Pacific immigrants/refugees (1) and Hispanic residents (1)
- ▶ **A community survey on housing needs and barriers to housing choice** (English, Spanish, Chinese, Korean, Russian, Tagalog, Amharic, Vietnamese)
- ▶ **“Pop up” engagement** to reach community members where they are (e.g., outside a grocery store, through houses of worship, at community events) (6 in Aurora, 6 in Denver, 6 in Boulder County)
- ▶ **Neighborhood Conversations** in West Denver and Cole neighborhoods
- ▶ **Presentation at a public hearing during public comment period** to present the findings from the AFH to policymakers and the broader community

COMMUNITY ENGAGEMENT ELEMENTS



COMMUNITY ENGAGEMENT TIMELINE

| Activity Type | Oct | Nov | Dec | Jan | Feb | Mar |
|-------------------------------------|-----|-----|-----|-----|-----|-----|
| Stakeholder focus groups & meetings | ■ | ■ | ■ | | | |
| Resident focus groups | ■ | ■ | ■ | | | |
| Resident survey | ■ | ■ | | | | |
| Pop up activities | | ■ | ■ | | | |
| Neighborhood conversations | | | ■ | | | |
| Community Meetings | | | | ■ | ■ | ■ |
| Public Hearings | | | | | | ■ |
| Big Event | | | | | ■ | ■ |

COMMUNITY ENGAGEMENT PLAN

In addition we encourage:

- ▶ **Social media engagement** —   

We hope that PJs, PHAs and partners will use their social media channels to drive outreach and to dialogue with the community on “hot topics” throughout the AFH.

- ▶ **Use Community Engagement in a Box** —

Empowers you to use the tools developed for the AFH community engagement and expand the reach of community engagement beyond BBC’s scope of work.



COMMUNITY ENGAGEMENT IN A BOX MATERIALS

- ✓ 10 resident surveys in English and 10 in Spanish
- ✓ 10 flyers promoting the survey in English, 10 Spanish, 1 Vietnamese, 1 Chinese, 1 Korean, 1 Russian, 1 Amharic, 1 Tagalog
- ✓ Moderator's discussion guide for facilitated conversations and tabling at events

QUESTIONS? WANT TO REQUEST FLYERS OR SURVEYS?

Need surveys in languages other English or Spanish?

Call or email Jen Garner with BBC
office: 800-748-3222 ext. 236
email: jgarner@bbcresearch.com

COMMUNITY ENGAGEMENT PLAN

We would appreciate your involvement in:

- ▶ Promoting engagement opportunities and inviting your residents, consumers, friends, neighbors, clients to participate
- ▶ Engaging residents in discussions about fair housing barriers. A list of suggested questions for discussion at resident meetings (e.g., landlord tenant counseling events, tabling) is included in the box.
- ▶ Sharing your local data and knowledge with us (examples on the next slide).

AREAS FOR LOCAL DATA AND INFO SHARING

Please send data and reports to Mehgie Tabar at mtabar@bbcresearch.com:

- ▶ Number, location, type and impact of evictions on protected classes;
- ▶ Data or studies examining turnover/school moves of children related to lack of housing affordability, impact on education, etc.;
- ▶ Analysis of access to transit and other types of public transportation by neighborhood, taking into account socioeconomic status (SES);
- ▶ Land use restrictions (including occupancy restrictions) and the effects on protected classes,
- ▶ Analysis of local policies and regulations that restrict access to housing and services for persons with disabilities; and
- ▶ Environmental health challenges in neighborhoods.

DISCUSSION

TOP HOUSING/FAIR HOUSING CONCERNS

- ▶ What are your top housing concerns (and/or fair housing concerns) in your jurisdiction/population served?
- ▶ *To what extent do you believe protected classes are disproportionately impacted by those concerns?*
- ▶ How would you describe the fair housing landscape in the region?
- ▶ To what extent do fair housing issues exist in the region—segregation, disproportionate housing needs, disparities in access to opportunity, racially or ethnically concentrated areas of poverty (R/ECAPs)?
- ▶ Which populations are most likely to experience housing discrimination? What is the nature of the discrimination?

ACCESS TO HOUSING AND OPPORTUNITY FOR PERSON WITH DISABILITIES

- ▶ How would you characterize the housing stock available for persons with disabilities? Is it adequate? What types of housing are most needed? Where are affordable, accessible units located? Near services? Employment? Transit?
- ▶ To what extent do persons with disabilities reside in segregated or integrated settings?
- ▶ How easy is it for persons with disabilities to receive accommodations? What are the major barriers?
- ▶ Is ADA compliance an area of concern? Does this need to be improved?

ACCESS TO OPPORTUNITY

- ▶ When you think of the concept of “opportunity” what comes to mind? What are the core aspects of opportunity that every resident should have access to?

- ▶ To what extent are protected classes able to access the following?
 - Transportation
 - Proficient schools
 - Jobs
 - Government services and facilities (e.g., rec centers/parks)
 - Public infrastructure (for people with disabilities)

QUESTIONS?